

MIT OpenCourseWare
<http://ocw.mit.edu>

12.001 Introduction to Geology
Spring 2008

For information about citing these materials or our Terms of Use, visit: <http://ocw.mit.edu/terms>.

Zones of solar radiation and atmospheric convection

Subtropical deserts: Air is dried before it leaves the equator

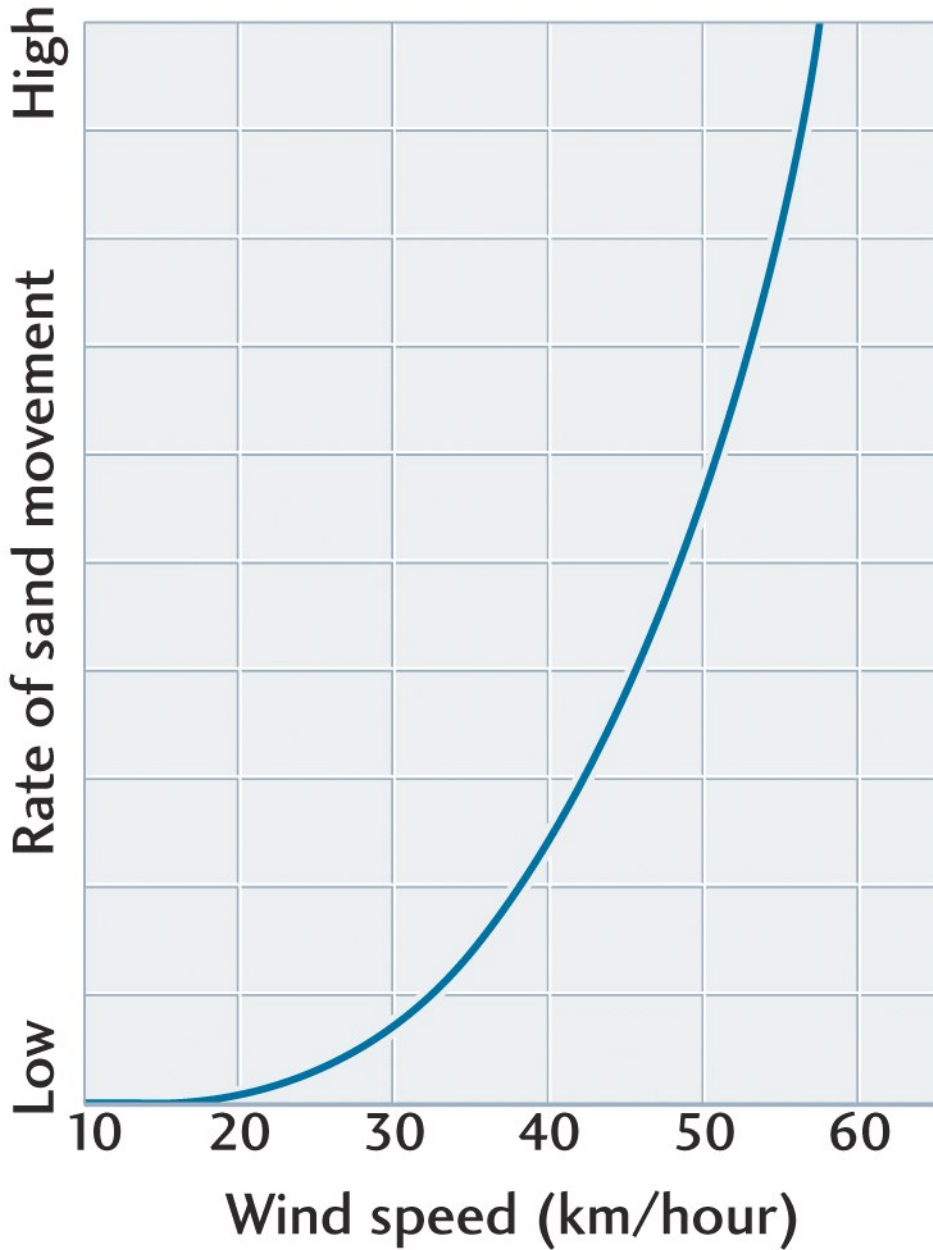
Image removed due to copyright restrictions.

Subtropical deserts: Air is dried before it leaves the equator

Desert Weathering is Characterized By:

- a dominance of physical weathering
- minimal chemical weathering, consisting mainly of oxidation of mafic minerals
- formation of *desert varnish*: a weathering veneer formed of a mixture of clays and smaller amounts of iron and manganese oxides.

Sand movement



The rate of sand transported by wind increases exponentially with wind speed

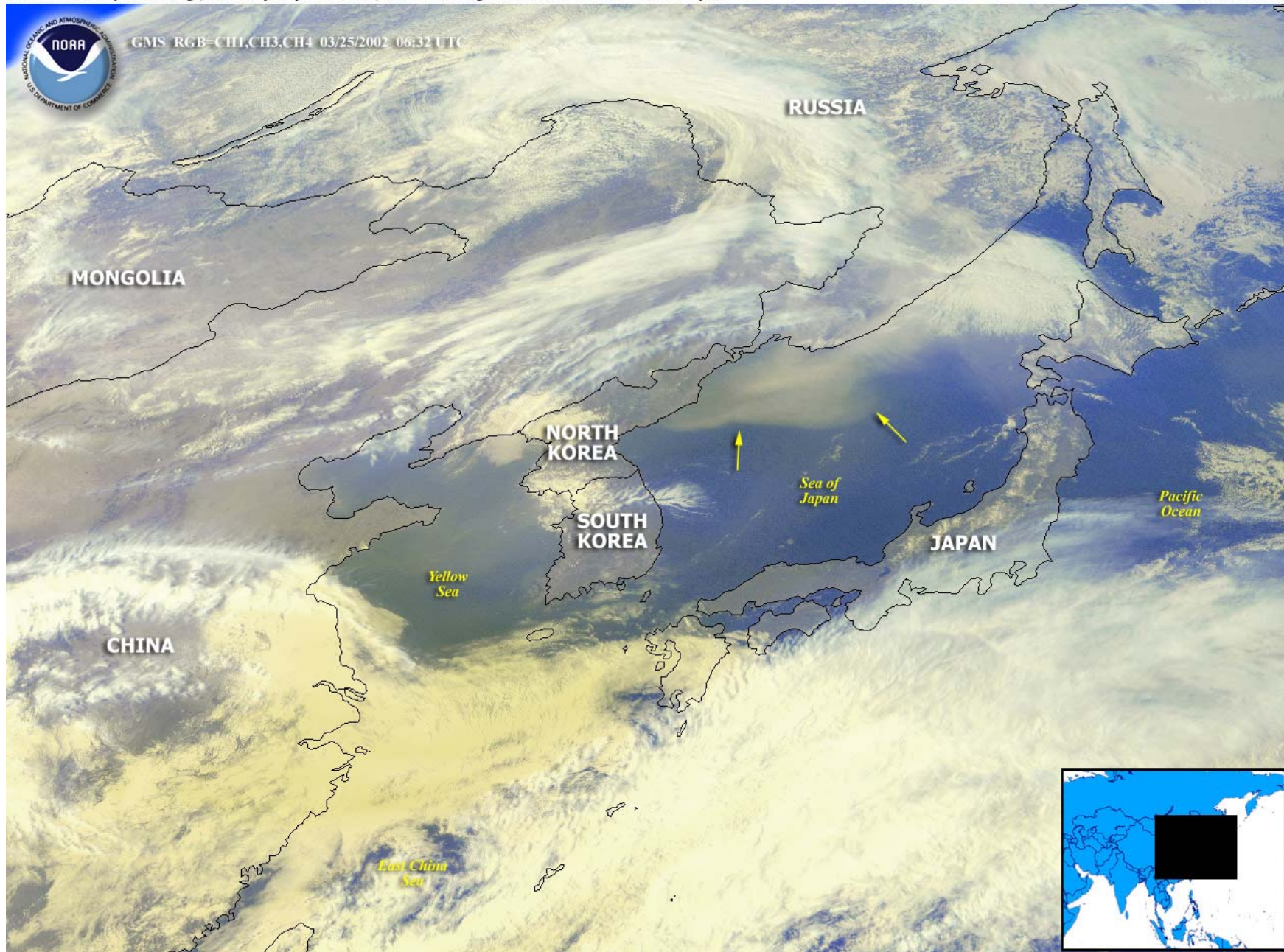
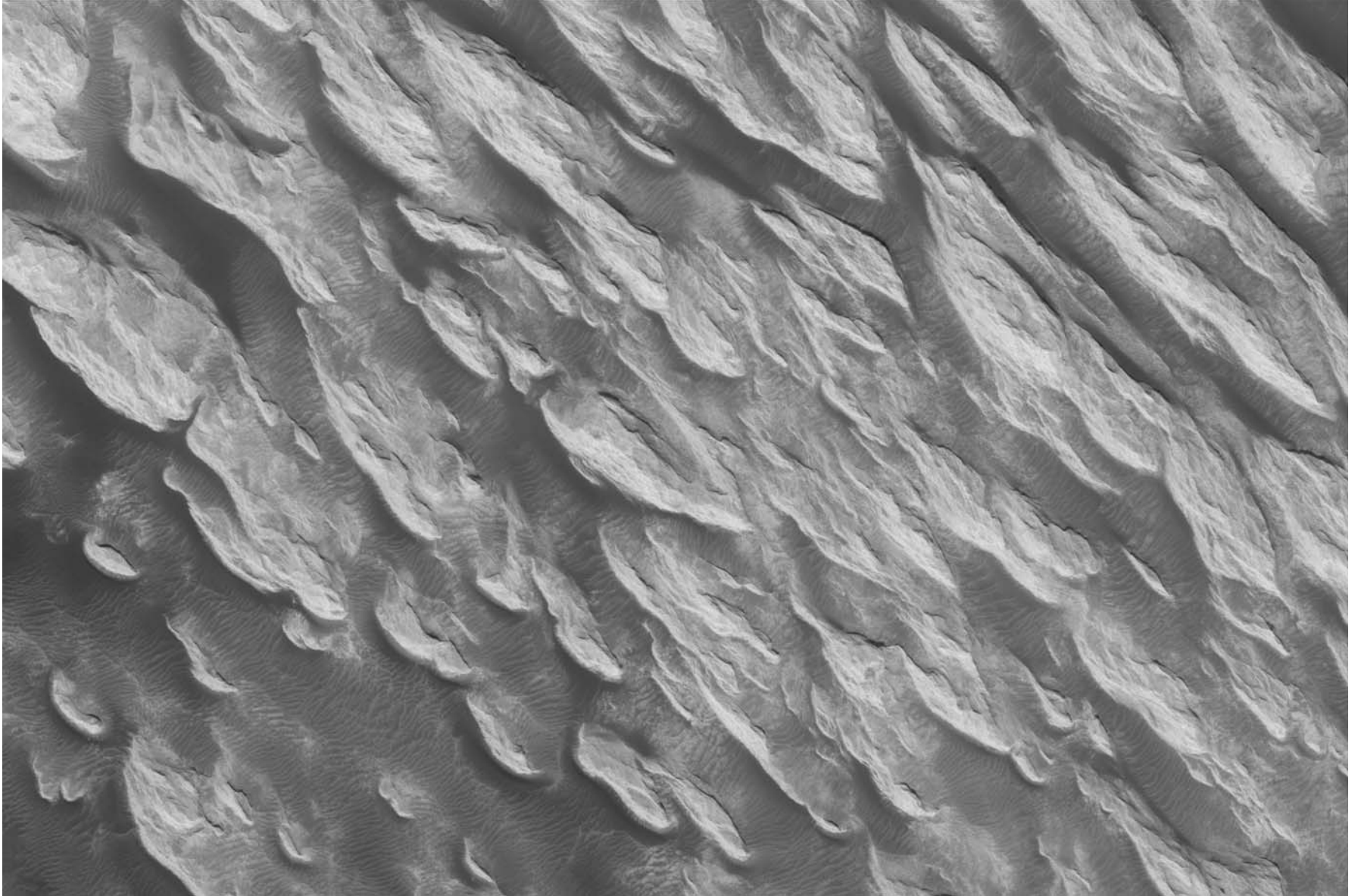
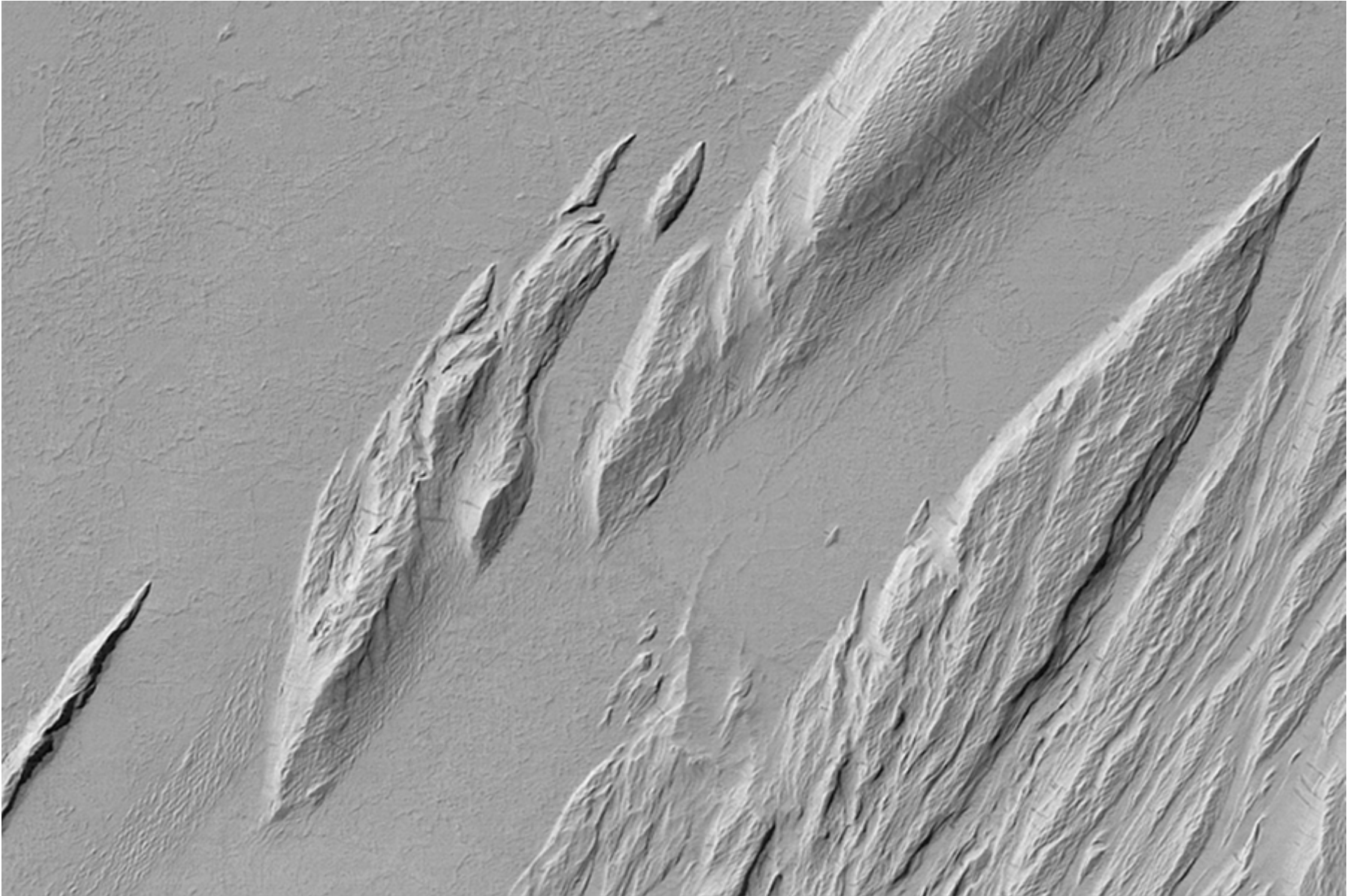


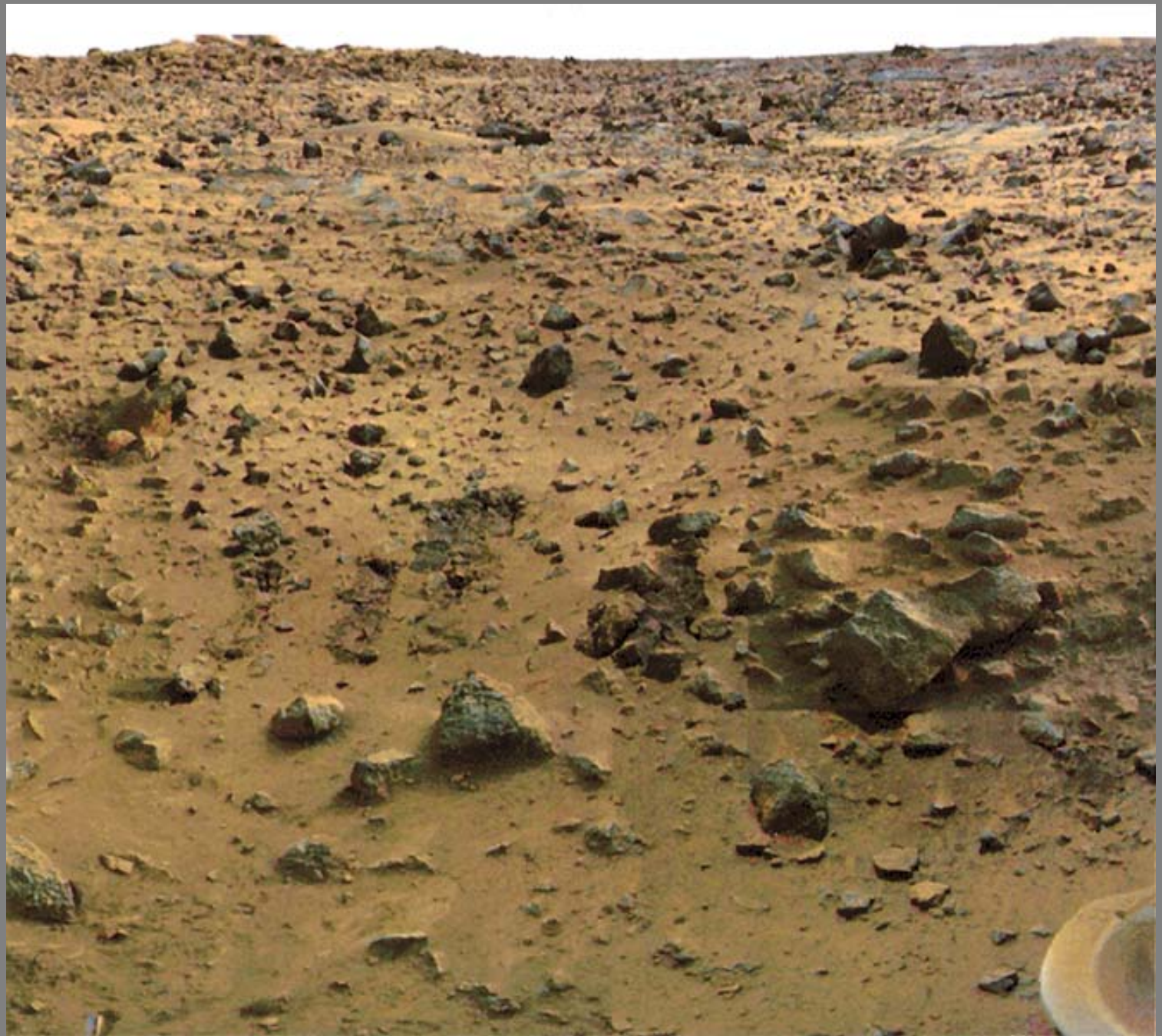
Image courtesy of NOAA.

Yardangs, Mars



Yardangs, Mars





Gobi: Flaming cliffs of Bayanzag

Image removed due to copyright restrictions.

Roy Chapman Andrews, director of the American Museum of Natural History, explored Mongolia and was the first person to find fossilized dinosaur eggs (Oviraptor), near this site, on July 13, 1933.



Image courtesy of NASA.