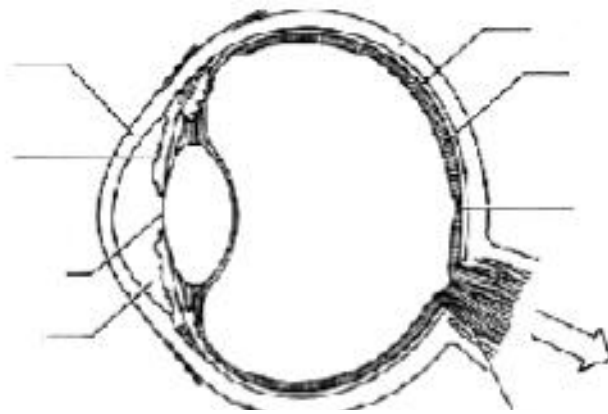


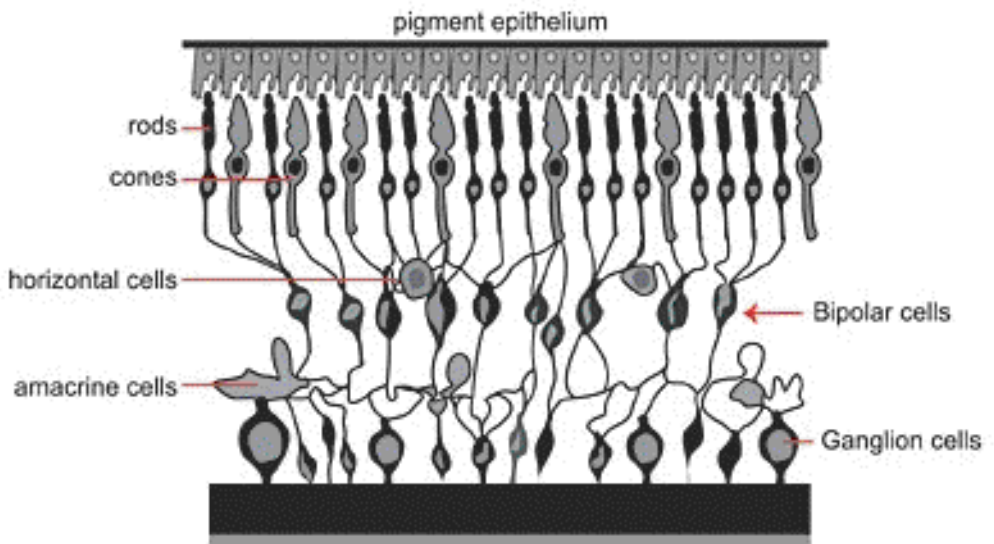
Eye

- Cornea
- Aqueous Humor
- Pupil
- Lens
- Vitreous Humor
- Retina



Retina

- from the back
- Pigment epithelium
- receptor
  - rods
  - cones
- horizontal cells
- bipolar cells
- amacrine cells
- ganglion cells

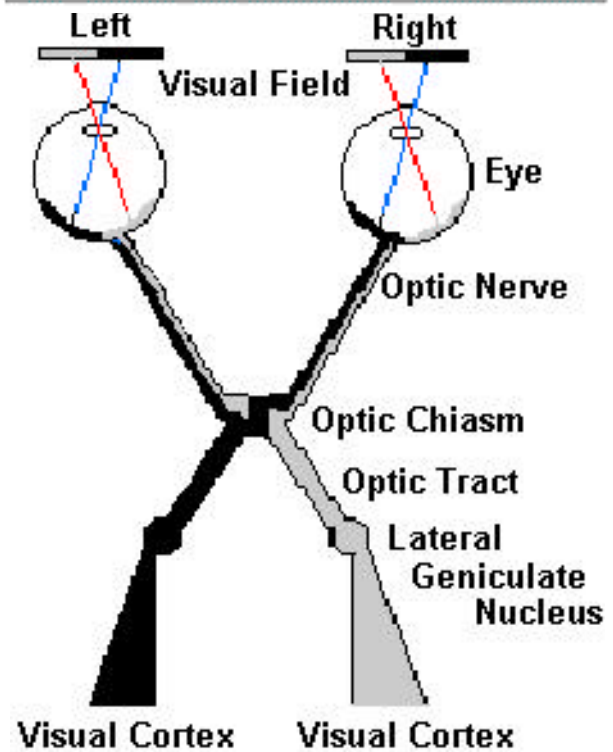


To the brain

- optic nerve
- optic chiasm
- lateral geniculate nucleus of the thalamus
- primary visual cortex
- extrastriate cortex

Detecting light

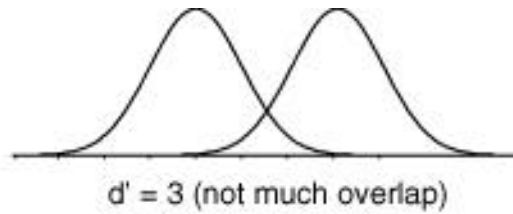
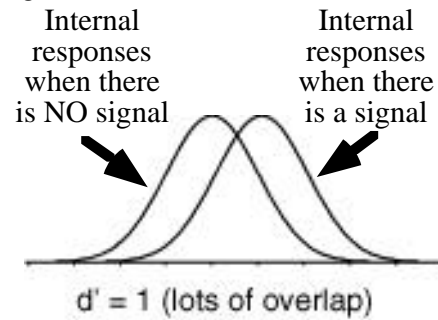
Is there an absolute threshold?



**signal detection theory**

<http://sucia.stanford.edu/~lera/psych115s/notes/signal/>

RESPONSE	STIMULUS	
	YES	NO
YES	HIT	<b>False alarm</b>
NO	<b>MISS Error</b>	TRUE NEGATIVE



criterion  
d'

ROC curves

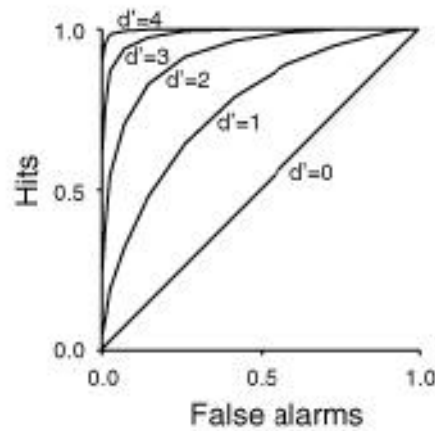
If we have some time

How do you know that white is white?

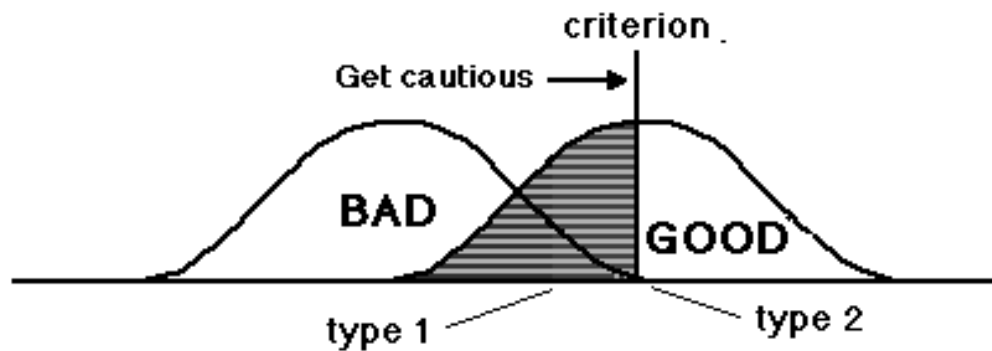
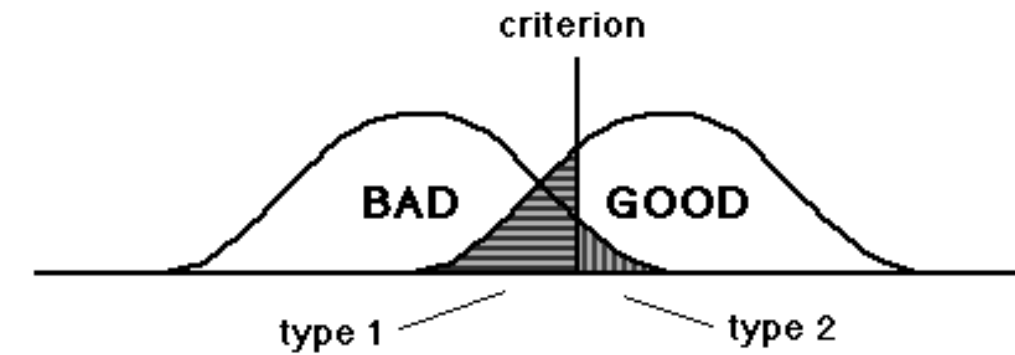
What is the operating range of a neuron?

What is out there in the environment?

light and dark adaptation



How to get from spots of light to ethnic prejudice



Get ignorant (That makes the distributions wider so they overlap more)

